

ARCHITECT PETE SANDALL LET THE SLOPE OF THE HILLSIDE DICTATE THE ROOFLINE OF PHIL HALLIN'S PORT TOWNSEND WEEKEND HOME. CONCRETE WALLS FRAME STAIR-STEPPED PLANTING BEDS THAT EASE THE TRANSITION FROM DRIVEWAY TO FRONT DOOR AND HELP ANCHOR THE HOME TO ITS SITE, WHICH OVERLOOKS PUGET SOUND.

## HOME OF THE YEAR

ARCHITECTURE: Sandall Norrie Architects  
INTERIOR DESIGN: Virginia Stamey  
AWARDED: A \$300 gift certificate from  
Dimensions Design Center

**a perfect fit**  
a port townsend getaway  
settles into its hillside niche

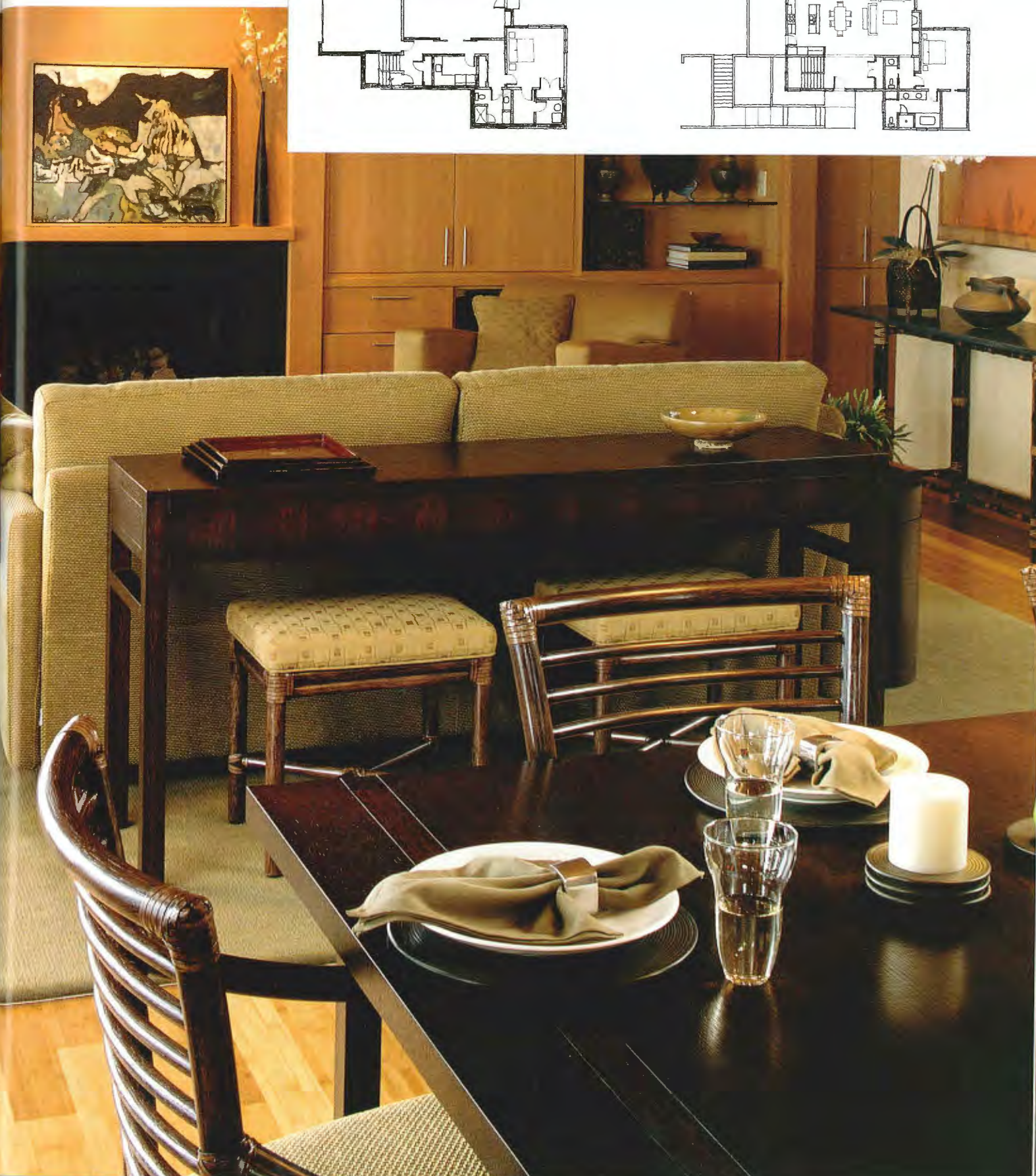
WRITTEN BY THEA NYBERG PHOTOGRAPHS BY PRO IMAGE PHOTOGRAPHY

TEXTURED UPHOLSTERY AND DARK WOOD FURNITURE COMPLEMENT THE LIVING ROOM'S NATURAL PALETTE. CUSTOM COFFEE TABLE DESIGNED BY VIRGINIA STAMEY, (206) 623-5944. CLEAR GLASS PENDANT LIGHTS (OPPOSITE, TOP) HOVER OVER THE EBONIZED-OAK DINING TABLE BORDERING THE KITCHEN, WHERE FIR CABINETS ARE COUPLED WITH SOAPSTONE COUNTERS. PENDANT LIGHTS FROM CURRENT, (206) 622-2433. A CONCRETE DECK OVER THE GARAGE (OPPOSITE, BOTTOM) TAKES ADVANTAGE OF THE IDYLIC SETTING.



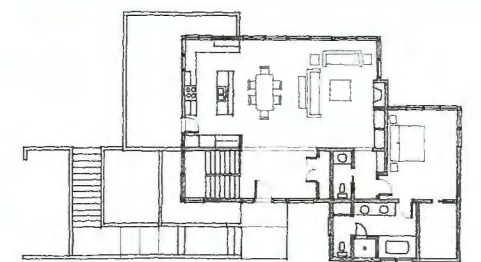
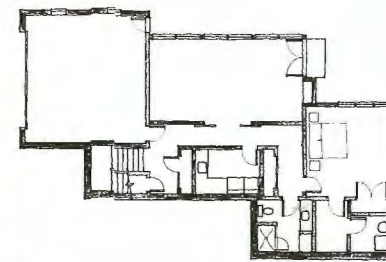
**P**erched on a slope overlooking Puget Sound, Phil Hallin's Port Townsend home fits snugly into the hillside. To look at it, you would never guess the arduous obstacles the tranquil setting once presented: overgrown blackberry bushes, height restrictions and sensitive-site designations were formidable challenges. "It really wasn't too encouraging," admits the software design engineer. "But it had a fantastic view and is very close to uptown and downtown Port Townsend—all the things that I desired in a spot."

To turn his newly acquired blackberry patch into a less thorny retreat, Hallin hired Seattle architect Pete Sandall of Sandall Norrie Architects. Instead of allowing the onerous restrictions to interfere with his creative vision, Sandall collaborated with Discovery Bay Construction to work within the property's limitations, using them to inspire and guide the home's compact design and productive use of space. Orienting the building to face the view from nearly every room, Sandall optimized the lot size and employed a sloping roof, mirroring the lines of the hillside. As a result, the two-story residence's exterior belies its 3,300-square-foot



Lower floor

Main floor



ACID-ETCHED CONCRETE FLOORS (ABOVE LEFT) ADD WARMTH TO THE LOWER LEVEL; SLIDING DOORS CAN BE EXTENDED TO ENCLOSE THE OFFICE. GENEROUS FIR-TRIMMED WINDOWS LIGHT THE CORNER STAIRWELL (ABOVE RIGHT). THE DINING TABLE (OPPOSITE) SEPARATES THE KITCHEN FROM THE LIVING ROOM, WHERE STOOLS STOWED UNDER A SOFA TABLE PROVIDE EXTRA SEATING WHEN COMPANY CALLS. MCGUIRE STOOLS AVAILABLE TO THE TRADE AT STEPHEN E. EARLS SHOWROOM, (206) 767-7220.

dimensions. "The height restrictions and the lot coverage helped the design and how well it fit into the site," explains Sandall. "It looks like a single-level house as you approach, but there is a full story below." Currently a weekend escape from Hallin's Seattle condo, the residence was also tasked with functioning as a future retirement home, accomplished by creating a self-sustaining main level devoid of any hurdles for the mobility challenged.

Sandall combined natural materials, such as cedar and fir, with strong, clean lines to satisfy the homeowner's vision. "Phil wanted a contemporary house but also a warm, livable house," Sandall says. When you enter the open floor plan, fir greets you at every turn—from the cabinets in the living room and kitchen to the high, slanted

Architect Pete Sandall used the onerous property restrictions to **INSPIRE** and **GUIDE** the home's compact design and **PRODUCTIVE USE OF SPACE.**

ceiling. Caramelized bamboo coats the heated floors, casting a warm glow across the space. Abundant windows take center stage, forging a strong bond between the exterior and interior. "Everywhere you go here, each room is very connected to the outdoors. It makes it very special," beams Hallin.

To play off the indoor-outdoor feel that pervades the home, interior designer Virginia Stamey utilized nature-inspired colors. "It's almost like a treehouse; you feel like you are part of the outside," Stamey explains. "That influenced my palette of earth-based tones, which are not too different from what you would see outside the window."

The living room coaxes you to linger. Sofas covered in soft, textured fabrics and a deep-hued wood coffee table meet around the

Where dream kitchens become real kitchens.



The first step to your uncompromised kitchen is to explore a Sub-Zero and Wolf showroom. Here, you touch. Feel. Discover. Get ideas. See how the most inspiring kitchens are inspired by Sub-Zero and Wolf.



Call our Design Center, to schedule a showroom visit, at (206) 284-8400



**Bradlee Distributors**

[www.bradlee.net](http://www.bradlee.net)

Seattle • Portland  
 Calgary • Vancouver  
 1400 Elliott Avenue W.,  
 Seattle

**METAL**  
 SOLUTIONS

CUSTOM DESIGN & FABRICATION

206/682.5587

SEATTLE  
 ARCHITECTURAL  
 FINISHING  
 STUDIO

*Venetian Plaster  
 applied by Artisans.  
 20 Years Experience.  
 Walls, floors, and more...*

206.838.5888  
 WWW.SEATTLEAFS.COM

SEATTLE  
 ARCHITECTURAL  
 FINISHING  
 STUDIO

S  
 A  
 F  
 S

black honed-granite fireplace. Vertical-grain fir cabinets, meticulously chosen by Stamey, to ensure consistency, discreetly house home entertainment equipment. Hallin's expanding collection of contemporary artwork—some acquired on jaunts to area galleries—dots the walls throughout the house.

To separate the kitchen and living room, the designer employed an extendable, ebonized-oak dining table. Clear-glass pendant lamps float over the table like sparkling jellyfish. Even the kitchen enjoys the view, the window over the sink providing a picture-perfect snapshot. Black soapstone counter tops and stainless-steel appliances are a pleasing contrast to the wood cabinets.

Tucked around the corner and out of sight of the main living area, the master bedroom and bath reside in an inviting private alcove. The bedroom is light and airy, thanks to corner windows, and is decorated with modern Italian furniture. A comfy chair calls out for a lazy afternoon read. The bath is dominated by a large tub lined in pillowed tiles that appear almost soft to the touch. Fir makes another appearance on the vanity and cabinets, and honed travertine is the material of choice for the tiles and counter top.

As you move to the lower level, tall, fir-trimmed windows soak the corner staircase in pools of natural light. Rich-toned acid-etched concrete floors warm the space, giving the impression of weathered tile. The main room serves double duty as a gym and office, and it can be easily converted into a private guest space by closing the substantial sliding fir doors that retract into the wall when not in use.

The outdoor spaces are small but enticing; a garage-roof deck off the kitchen and an entry courtyard provide ample opportunities to enjoy the lush setting. From the deck, which faces the street, Hallin can greet neighbors and revel in the peaceful atmosphere. "My condo is right downtown in Seattle, so I get all the city noise," Hallin says, surveying the sweeping vista stretched out before him. "When I come out here, all I can hear is the birds." ■